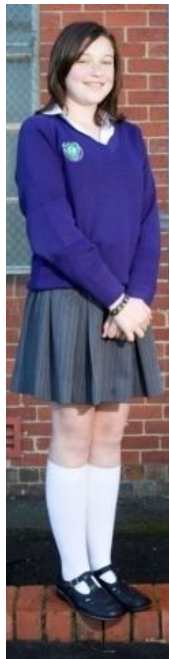


WHAT IS THE COLLEGE UNIFORM?



Summer

College checked dress (full length, long-sleeved dress also available) knee high white socks.



Winter

College skirt or navy pants. College white long-sleeved shirt with Peter Pan collar. Knee high white socks or grey tights.



Sport Uniform

White polo shirt with College logo; navy shorts or track pants with College name and non-marking sports shoes.

Optional

College blazer or spray jacket.
No other jacket is permitted.

All year round

College purple woollen jumper. Black lace up or T-Bar school shoes (no runners). Head Scarf – White or Navy; and neck scarf – white, navy, purple or grey.



All girls who ride a bike to school must wear a Road Safety approved protective helmet as required by law.